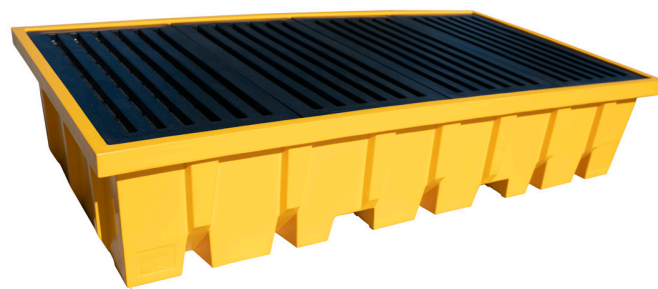


DOUBLE IBC SPILL CONTAINMENT

INDOOR SPILL CONTAINMENT BUND PROVIDES A SAFE, CONVENIENT AND EFFECTIVE FACILITY IN STORING TWO IBCS SIDE BY SIDE FOR EASY ACCESS TO EACH UNIT.

FEATURES AND BENEFITS:

- Proudly Australian Made
- Excellent chemical resistance and will not rust or corrode
- Allows safe and convenient IBC tank handling and dispensing.
- Large capacity spill containment bund.
- 1210 x 2425mm steel reinforced deck, allows safe and convenient placement of IBC tanks.
- Supports uniformly distributed loads of up to 4500kg. All components are easily removed for cleaning
- Accessible from either side.
- Can be lifted by forklift.
- 3 x 2" drain bungs



SPECIFICATIONS

Material:	UV stable Low Density Polyethylene
Weight:	125 kg
Sump Capacity:	1418 litres
UDL:	4500kg
Forklift Access:	2 Way
Dimensions:	Height 510mm Width 2530mm Depth 13100mm Storage 2 x 1000L IBC units

INSTRUCTIONS

1. Ensure stored liquids are chemically compatible with polyethylene plastic.
2. Ensure any liquids in sump are removed promptly.
3. Ensure payload does not exceed maximum UDL.
4. Ensure largest container volume does not exceed sump capacity.

TO ENSURE CONFIDENCE OF THIS PRODUCT IN OPERATION, THE FOLLOWING IS RECOMMENDED:

- Not to be stored in direct sunlight.
- Used in temperate climate locations in Australia and All New Zealand locations.

Disclaimers: Flammables Notice: If using this product with flammable liquids, please consider the regulations that apply to storage and handling of flammable liquids and the safety of this application, specifically flammable vapors, static discharge and heat sources.